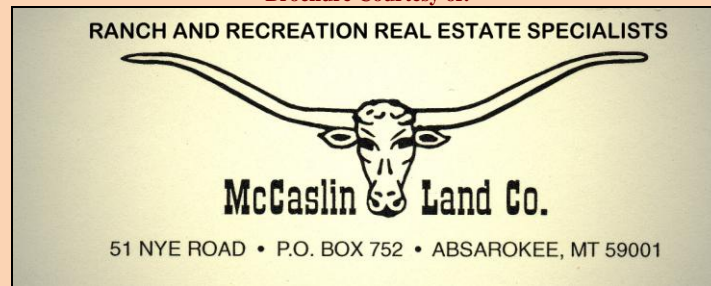


Brochure Courtesy of:



## CATHEDRAL MOUNTAIN LOT



### CATHEDRAL MOUNTAIN RANCH

CATHEDRAL MOUNTAIN RANCH lies in the upper Stillwater River area of the Beartooth Mountains 3 miles above the community of Nye, Mt. This is a gated community of hilly landscapes bordering the Gallatin National Forest. Though home sites are designated as a 100 ft. diameter circle, owners have use of approximately 285 acres common area for hiking and accessing the National Forest. As an owner you have use of a large community center and 3 fishing lakes. A horse association has been formed for owners who care to board and have available their animals.



### Landscape around the Lot

Beauty is in all directions, from views of the mountains to the Stillwater River below. Pine, fir, and aspen trees abound.

Wildlife of marmots, squirrels and mule deer are in abundance with occasional visits by moose, black bear and elk. Birdlife common to the area is golden eagles, meadowlarks, finches, partridge and grouse.



Fishing, hiking, horseback riding, and ATVing is right out the back door with many trails, creeks, rivers and lakes available within a short distance.

**View #1 from the Lot**



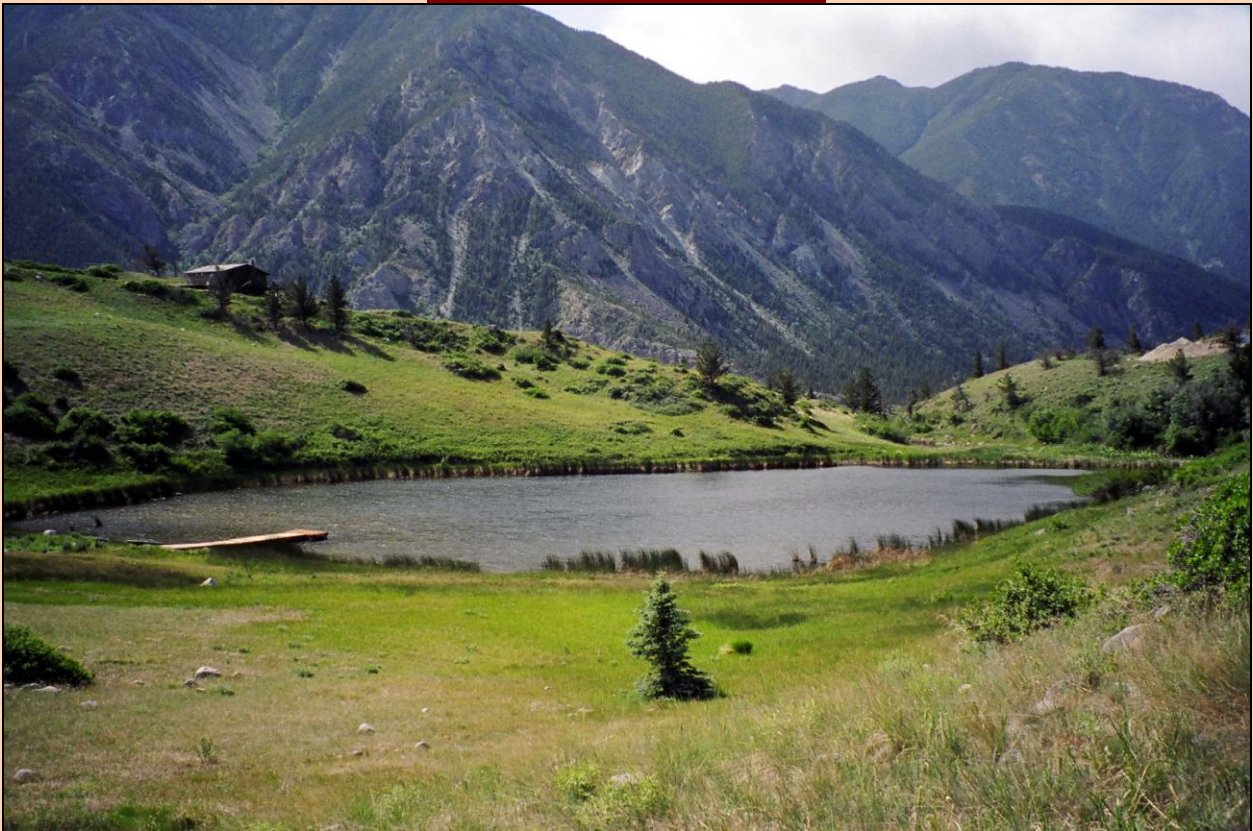
**View #2 from the Lot**



## The Community Center

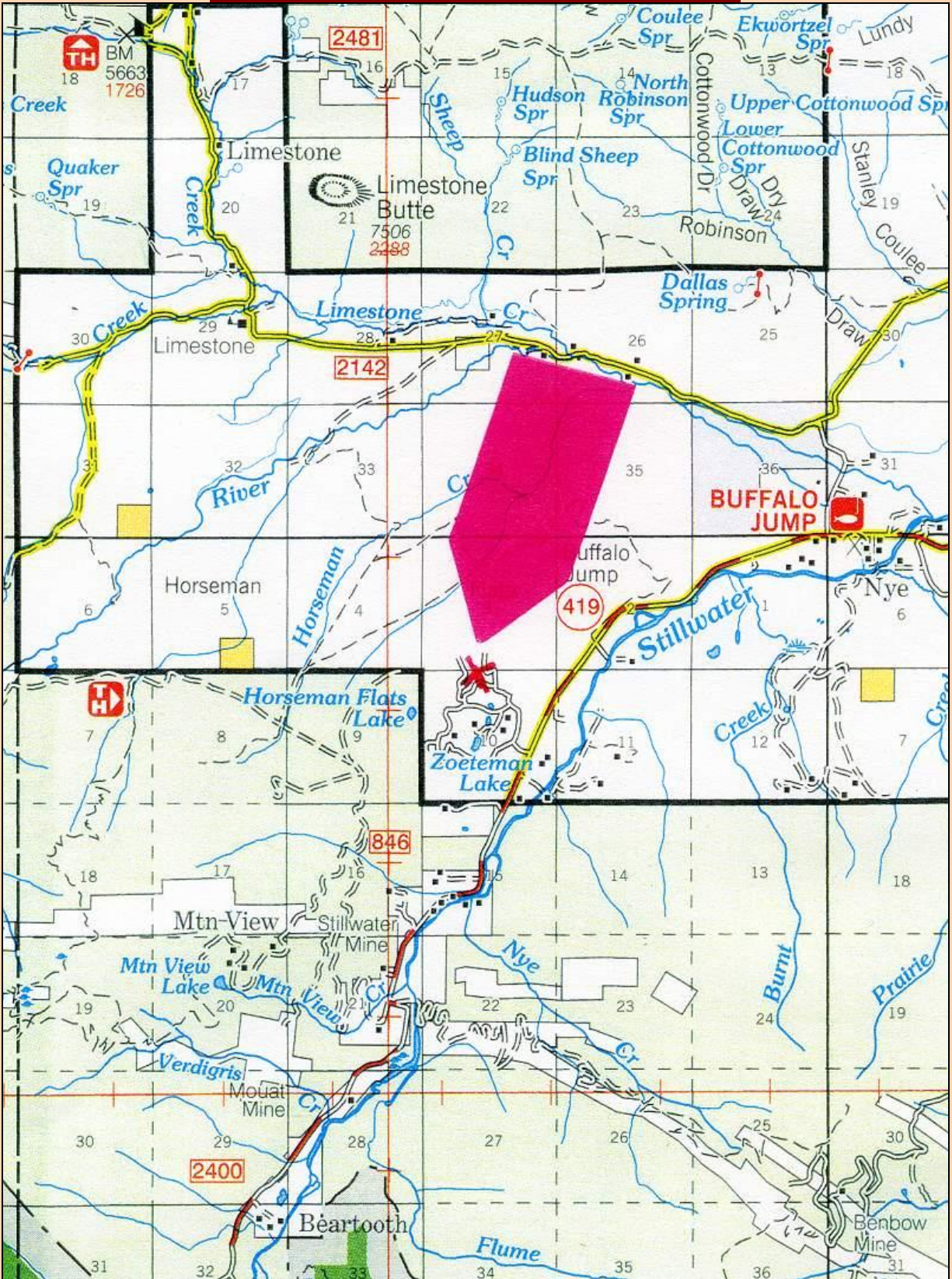


## One of the Fishing Lakes





### Cathedral Mountain Map #2 (CLOSE-UP)





**Neil E. McCaslin - Broker/Owner**  
**51 Nye Road - P.O. BOX 752**  
**Absarokee, MT 59001**  
**Office (406) 328-4085**  
**Cell (406) 321-0340**  
**mailto:Neil@McCaslinLand.com**

\* The statements made herein while not guaranteed are from sources deemed reliable, and maps are for visual reference only. This offering is subject to prior sale, change or withdrawal without notice.